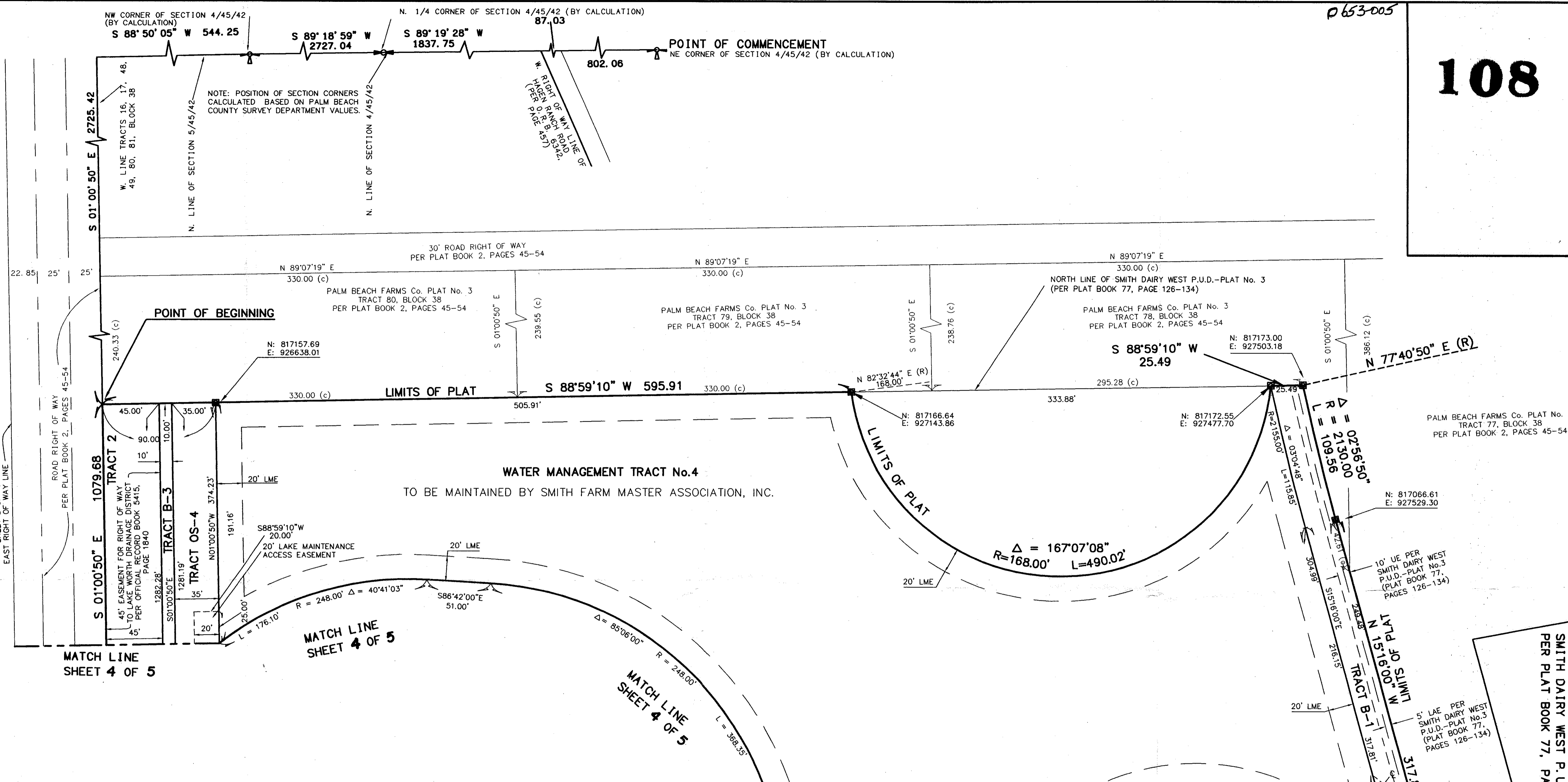


0653-005

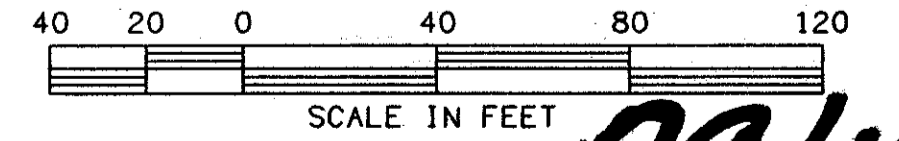
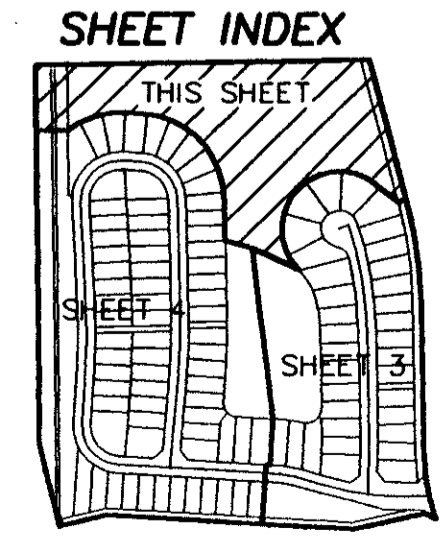


SUNSHINE STATE PARKWAY
PER THE 1955 RIGHT OF WAY MAP
PREPARED BY GANNETT, FLEMING, CORDRY & CARPENTER, INC.
SHEET B OF 13
EAST RIGHT OF WAY LINE

SMITH DAIRY WEST P.U.D. - PLAT No. 3 TRACT "A" REPLAT
BEING A REPLAT OF TRACT "A" OF SMITH DAIRY WEST P.U.D. - PLAT No. 3
AS RECORDED IN PLAT BOOK 77, PAGES 126 THROUGH 134 OF
THE PUBLIC RECORDS OF PALM BEACH COUNTY, FLORIDA
IN PART OF SECTIONS 4 AND 5, TOWNSHIP 45 SOUTH, RANGE 42 EAST,
PALM BEACH COUNTY, FLORIDA
SHEET 5 OF 5
JULY 1996

SUBDIVISION
BOOK
PAGE
ZONING P.U.D.
ZIP CODE 33447
P.L.S. NAME

- LEGEND:
- PERMANENT REFERENCE MONUMENT "P. L. S. 4828"
 - PERMANENT CONTROL POINT "P. C. P. 4828"
 - R RADIUS
 - L ARC LENGTH
 - Δ DELTA (CENTRAL ANGLE)
 - PC POINT OF CURVATURE
 - PT POINT OF TANGENCY
 - PSM PROFESSIONAL SURVEYOR & MAPPER
 - PLS PROFESSIONAL LAND SURVEYOR
 - UE UTILITY EASEMENT
 - DE DRAINAGE EASEMENT
 - LME LAKE MAINTENANCE EASEMENT
 - N NORTHING (GRID)
 - E EASTING (GRID)
 - (c) CALCULATED
 - (R) RADIAL
 - MREE MAINTENANCE AND ROOF EAVE EASEMENT
 - LAE LIMITED ACCESS EASEMENT



SCALE: 1"=40'	NICK MILLER, INC. Surveying Planning & Development Consultants	DRAWN BY:
DATE: JULY 96		CHK:
SMITH DAIRY WEST P.U.D. - PLAT No. 3 TRACT "A" REPLAT		DRAWING NUMBER
2560 RCA Blvd., Suite 105 Palm Beach Gardens, Florida 33410 (561) 627-5200 D.B.P.R. Business License No. 4318		94014AW

0653-005

SMITH DAIRY WEST P.U.D. - PLAT No. 3
PER PLAT BOOK 77, PAGES 126 - 134

79/108